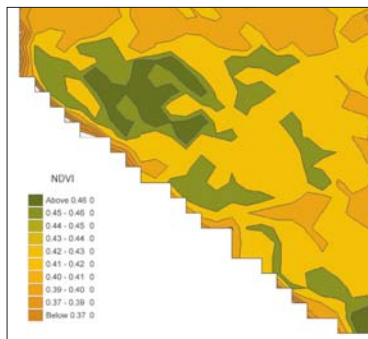
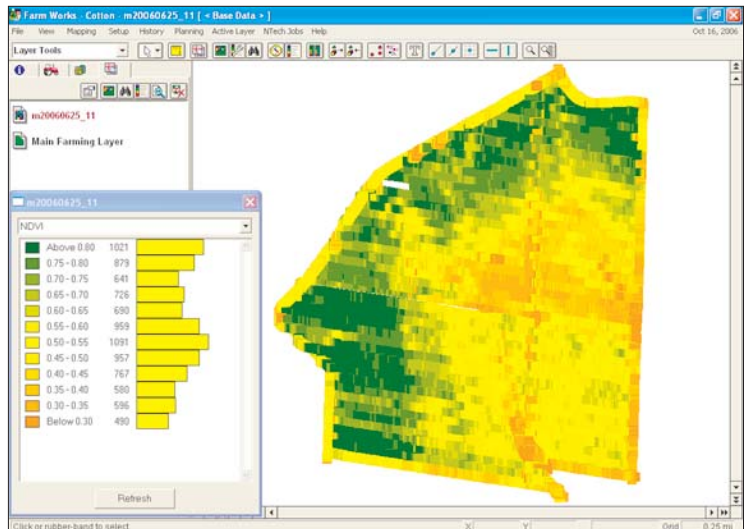


550-1-033

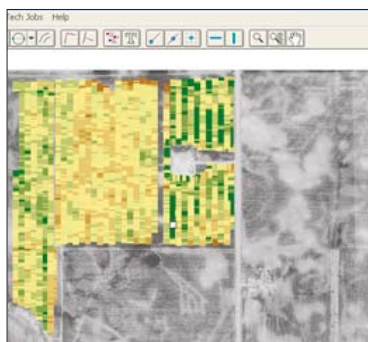
Desktop Mapper

Desktop Mapper is a complete mapping and layering software tool for generating and printing color maps from GreenSeeker[®] systems, and most yield monitor data, and most other agriculture data collected with a GPS receiver. Unique features, like the ability to offset position of the GPS receiver to sensor position, and other functions tailored to the GreenSeeker Sensor's capabilities make it the most suited GIS software for users of GreenSeeker RT200 and other NTech systems.

Desktop Mapper also has unique abilities for the post-processing and mapping of GreenSeeker RT220 multiple-sensor NDVI data during crop mapping operations. The software allows for creation of crop vigor NDVI maps of RT220 data with position data for each GreenSeeker sensor referenced from a single GPS receiver.



Contoured Views of the Data



Import Geo-referenced aerial images to reference maps

Features

- ◆ Included mapping tools let you draw fields, structures and landmarks.
- ◆ Download geo-referenced aerial photos, waterways and roads of your farm from the web at no charge.
- ◆ Calculate acreage of imported map data automatically.
- ◆ Accept soil test results to generate a data map.
- ◆ Display layer overlays to see the comparative effect of pH levels or soil types on yields and other biometric data.
- ◆ Use GreenSeeker or yield data to automatically draw field boundaries.
- ◆ Calculate soil sampling locations for any grid size.
- ◆ Import and export data in several formats including ArcView Shape files and delimited text files.
- ◆ Import yield data from most yield monitors to generate base, averaged, and contoured views.
- ◆ Use the Prescription Map Designer Tool to make application maps for traditional "map based" variable rate control.

Desktop Mapper was written and is supported by CTN Data Systems, creators of the FarmWorks software suite.

NTech Desktop Mapper for GreenSeeker®

System Requirements

550-1-033

Microsoft® Windows

Windows 98, 2000, XP with CD-ROM Drive

Pentium or Equivalent Processor

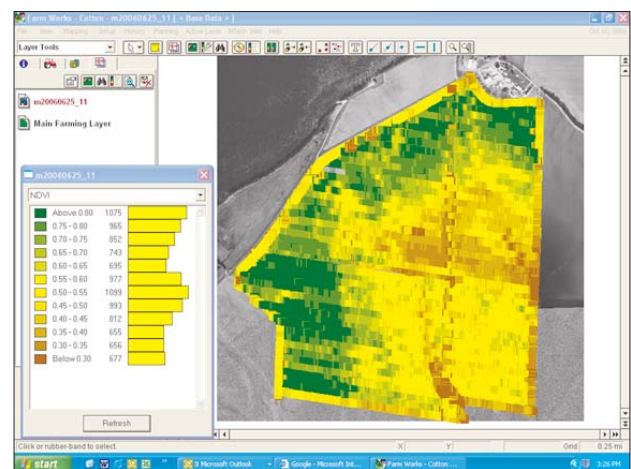
128MB of available system RAM

80MB of available disk space

800 x 600 or higher display resolution



An RT200 System senses the crop...



And Desktop Mapper creates flexible maps of various data including target rate, applied rate, and NDVI.



And collects data and controls rate with RT Commander software...

Desktop Mapper: an accessory for the following NTech Products

RT200/220	Real-Time Application and Mapping Systems
RT100	Single-Sensor Mapping System
RT Mapper	Data Collection Software for RT100 or RT200 Systems
RT Commander	Variable Rate Applicator Control Software for RT200 Systems