

RT Commander

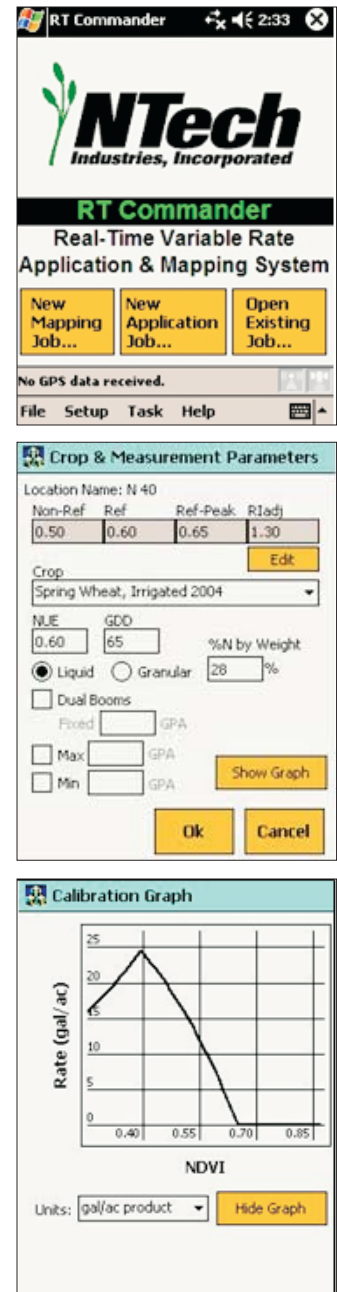
RT Commander is a software application for Windows PDAs that performs the configuration and data collection functions for NTech's RT200 Variable Rate Application and Mapping system.

With data coming from an array of boom-mounted GreenSeeker sensors and a GPS receiver, data to build a map of the vegetation over a field is collected in the software. Simultaneously the program computes a material application rate for the particular crop and directs the on-board rate controller to apply the specific rate at each point in the field as indicated by the vigor of the crop at that location.

The current NDVI value, GPS location, and path traversed are on the screen. Upon completing the field coverage, RT Commander creates a set of map data (shape file). This in turn may be opened in any of several map-rendering GIS programs to produce maps of vegetation, prescription or applied rates.

Features

- Displays GPS, NDVI and Application Rates—all in Real Time
- Logs to industry-standard shape file format for flexible mapping options
- Data output rate corresponds to GPS rate (1-5 points/sec typ.)
- Supports dozens of Rate Controllers including all major brands
- Logs applied rate (from controllers that provide that information)
- Uses any GPS with NMEA serial output including Raven, John Deere, Outback, Trimble
- Supports several fertilizing algorithms with updates available online which may be added by the user
- User-defined algorithm/tables 16 pt or 100 pt resolution



NTech RT Commander for GreenSeeker®

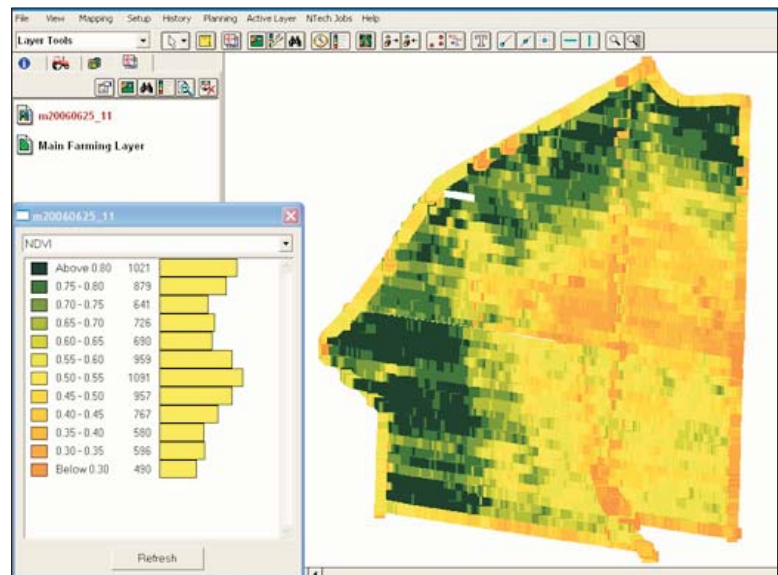
System Requirements

550-1-022

Compatibility

Operating System: PocketPC 2003 (WM3)

Platform: TDS Recon ruggedized PDA



A typical map created with Desktop Mapper from data collected with RT Command and an RT200 system.

Other Versions

RT Commander: High Resolution Mode. Collects data from individual sensors for higher resolution maps.

NTech Desktop Mapper. A tool for generating maps of RT200 data in standard or high-resolution mode.